

## ST JAMES COURT

Savannah, Cayman Islands

### PROPERTY DETAILS

Price: CI\$725,000	MLS#: 415895	Type: Residential
Listing Type: Condominium	Status: Current	Bedrooms: 3
Bathrooms: 3	Built: 2011	
Sq. Ft.: 1900		

### PROPERTY DESCRIPTION

Welcome to St. James Court Unit 10, a remarkable 2-storey town home located in the tranquil countryside of Savannah. With its stunning design, modern features, and convenient location, this residence offers a lifestyle of luxury and serenity. Boasting 3 bedrooms and 3 bathrooms, this spacious town home spans 1900 square feet, providing ample space for you and your loved ones. Each bedroom is thoughtfully designed to offer comfort and privacy, ensuring a peaceful retreat at the end of the day. Situated just across the street from the historic St. James Castle, you'll have the opportunity to immerse yourself in the rich history and vibrant activities that the Cayman Islands are famous for. Enjoy the breathtaking views of the Caribbean Sea, right from the comfort of your own home. Step inside and be captivated by the modern designer furnishings that adorn every corner of this impeccable residence. The open plan living area invites you to relax and entertain in style, with 10-foot ceilings adding to the sense of spaciousness and grandeur. As you venture outside, you'll be greeted by ample yard space, perfect for enjoying the cool breezes and embracing the wonderful country feel. Whether you want to unwind with a book, host a gathering, or simply bask in the tranquility, this outdoor oasis offers endless possibilities. Convenience is a key feature of St. James Court Unit 10. Located just a few minutes away from the Country Side Shopping Centre and Grand Harbour, you'll have access to an array of restaurants, shopping outlets, and entertainment options. Everything you need for a vibrant and fulfilling lifestyle is within easy reach. Don't miss this incredible opportunity to own a luxury town home in the peaceful Savannah country side. Get in touch now to schedule a viewing and secure your place in this idyllic setting.

### PROPERTY FEATURES

Views	Garden View, Pool View
Block	32E
Parcel	63H5
Foundation	Slab
Floor Level	1

### PRESENTED BY



**Bettina Baldwin**  
+1-345-916-7766  
bettina@paradisepropertiescayman.com

IMAGES











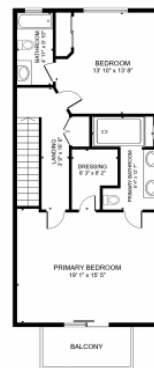






GROSS INTERNAL AREA  
FLOOR 1: 181 sq. ft. FLOOR 2: 181 sq. ft.  
EXCLUDED AREA: VERANDA 68 sq. ft. BALCONY 68 sq. ft.  
TOTAL: 181 sq. ft.

SIZES AND DIMENSIONS ARE APPROXIMATE. ACTUAL MAY VARY.



GROSS INTERNAL AREA  
FLOOR 1: 181 sq. ft. FLOOR 2: 181 sq. ft.  
EXCLUDED AREA: VERANDA 68 sq. ft. BALCONY 68 sq. ft.  
TOTAL: 181 sq. ft.

SIZES AND DIMENSIONS ARE APPROXIMATE. ACTUAL MAY VARY.