
PRIME EAST END 0.23 ACRE MEDIUM DENSITY LOT NEAR EAST END PRIMARY SCHOOL

East End, Cayman Islands

PROPERTY DETAILS

Price: CI\$125,000	MLS#: 420466	Type: Land
Listing Type: Med Density Residential	Status: Reduced	Width: 85
Depth: 136	Acres: 0.2319	

PROPERTY DESCRIPTION

This 0.2319-acre (10,101 sq ft) medium density residential lot is ideally located in East End, just minutes from East End Primary School and surrounding community amenities. Offering excellent development potential, the medium density zoning allows for duplex or multi-unit residential construction (subject to planning approval), making it an attractive opportunity for builders, investors, or first-time homeowners looking to develop in a growing area. The parcel is level and well-proportioned, providing flexibility in design and layout. Located in a quiet residential pocket, yet within convenient access to schools, shops, and the main East End roadway. East End continues to see steady demand for affordable residential development, making this a smart long-term investment or build-ready opportunity. Contact today for further details or to arrange a site visit.

PROPERTY FEATURES

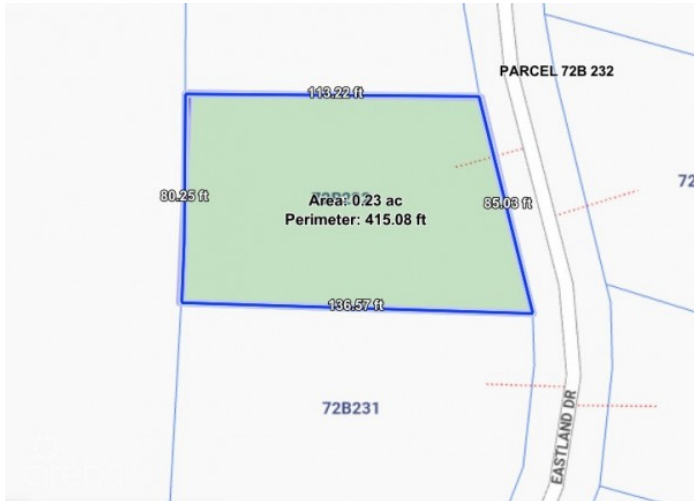
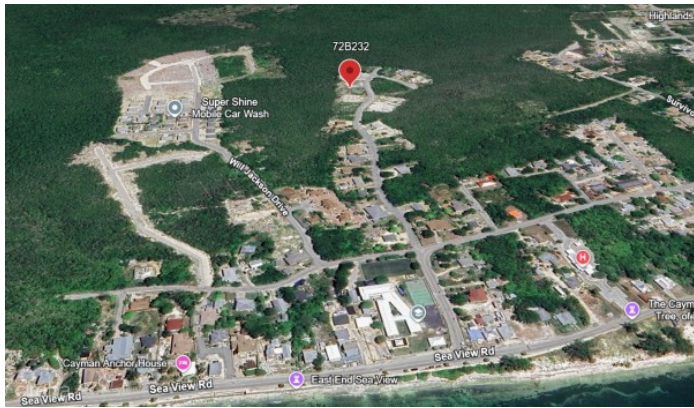
Views	Garden View
Block	72B
Parcel	232
Zoning	Medium Density Residential
Road Frontage	85
Soil	Rock

PRESENTED BY

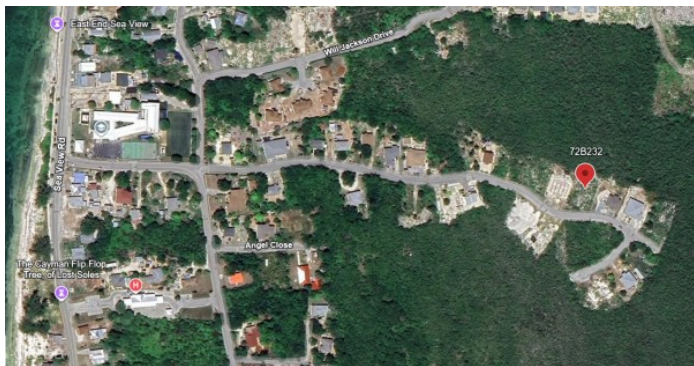


Bettina Baldwin
+1-345-916-7766
bettina@paradisepropertiescayman.com

IMAGES



		<p>72B232 Aerial 1</p> <p>Legend</p>
<p>Notes</p>		



		<p>72B232 Aerial 2</p> <p>Legend</p>
<p>Notes</p>		