



THE SAND BLUFF ESTATE | GUN BAY, EAST END

District: East End, Cayman Islands

MLS# 414483

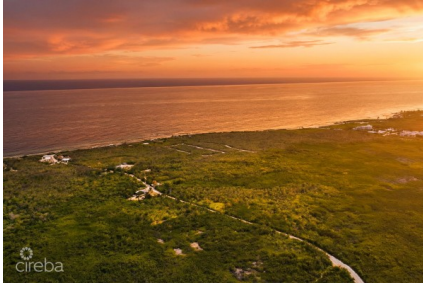
Beds: 5

Status: Current

Price: US\$19,900,000

Type: Residential

Baths: 5.5



100 ACRES HIGH ROCK LAND

District: East End, Cayman Islands

MLS# 420704

Width: 3,665

Status: New

Price: CI\$8,000,000

Type: Land

Depth: 1,550



EAST END LAND PARCEL 6.5 ACRE

District: East End, Cayman Islands

MLS# 419788

Width: 380

Status: Current

Price: CI\$3,500,000

Type: Land

Depth: 1,115



BELLA VISTA-LUXURY PANORAMIC OCEANFRONT 5 BEDROOM ESTATE

District: East End, Cayman Islands

MLS# 419636

Beds: 5

Status: Current

Price: US\$3,500,000

Type: Residential

Baths: 7



BEACH HOUSE IN EAST END

District: East End, Cayman Islands

MLS# 420036

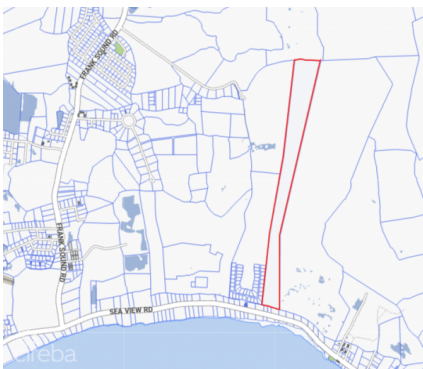
Beds: 4

Status: Current

Price: US\$3,250,000

Type: Residential

Baths: 4.5



MIDLAND EAST ACREAGE

District: East End, Cayman Islands

MLS# 420367

Width: 650

Status: Current

Price: CI\$2,500,000

Type: Land

Depth: 6,000



6.50 ACRES - INVESTMENT OPPORTUNITY

District: East End, Cayman Islands
MLS# 418628
Width: 580
Status: Current

Price: CI\$1,900,000
Type: Land
Depth: 780



EXCLUSIVE BEACHFRONT ESTATE PARCEL ON FRANK SOUND - 200 FT OF PRISTINE BEACHFRONT!

District: East End, Cayman Islands
MLS# 418325
Width: 200
Status: Current

Price: CI\$1,850,000
Type: Land
Depth: 300



43 ACRES - EAST INTERIOR BORDERING SALINA RESERVE

District: East End, Cayman Islands
MLS# 418833
Width: 1,475
Status: Current

Price: CI\$1,450,000
Type: Land
Depth: 2,243



HIGH COASTAL OCEANFRONT 230 FEET ON THE SEA

District: East End, Cayman Islands
MLS# 418227
Width: 230
Status: Current

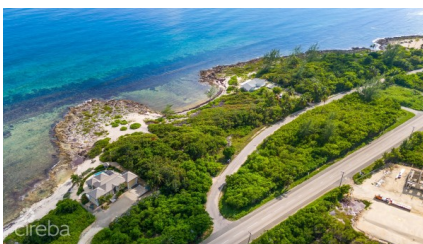
Price: US\$1,700,000
Type: Land
Depth: 250



STARFISH | BEACHFRONT LAND, FRANK SOUND

District: East End, Cayman Islands
MLS# 415755
Width: 100
Status: Current

Price: US\$1,495,000
Type: Land
Depth: 310



PISCES WAY OCEANFRONT

District: East End, Cayman Islands
MLS# 419826
Width: 240
Status: Current

Price: CI\$1,200,000
Type: Land
Depth: 467



23 ACRES DEVELOPMENT LAND - WITH 30' ROW - EAST END

District: East End, Cayman Islands

Price: CI\$1,100,000

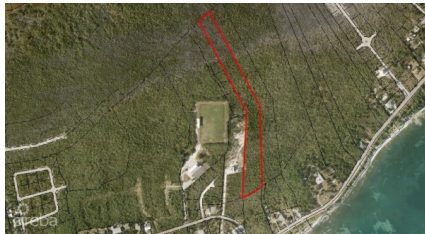
MLS# 419789

Type: Land

Width: 1,182

Depth: 932

Status: Pen/Con



EAST END DEVELOPMENT LAND

District: East End, Cayman Islands

Price: CI\$999,000

MLS# 418442

Type: Land

Width: 185

Depth: 1,850

Status: Current



534 OLD ROBIN ROAD

District: East End, Cayman Islands

Price: CI\$855,000

MLS# 419742

Type: Land

Width: 100

Depth: 1,290

Status: Current



MIDLAND EAST 5.44 ACRES

District: East End, Cayman Islands

Price: CI\$785,000

MLS# 419988

Type: Land

Width: 365

Depth: 738

Status: Current



RESIDENTIAL LAND IN FRANK SOUND

District: East End, Cayman Islands

Price: CI\$750,000

MLS# 420212

Type: Land

Width: 225

Depth: 222

Status: Reduced



8.5 ACRES OF EAST END AGRICULTURAL / FARM LAND

District: East End, Cayman Islands
MLS# 420659
Width: 1,019
Status: New

Price: CI\$650,000
Type: Land
Depth: 552



HOUSE - HIGH ROCK

District: East End, Cayman Islands
MLS# 419006
Beds: 5
Status: Current

Price: CI\$599,000
Type: Residential
Baths: 4



LARGE OCEAN VIEW PARCELS- 3 IN 1

District: East End, Cayman Islands
MLS# 420687
Width: 300
Status: New

Price: CI\$575,000
Type: Land
Depth: 100



EAST END LAND - 3.25 ACRES

District: East End, Cayman Islands
MLS# 419413
Width: 170
Status: Current

Price: US\$695,000
Type: Land
Depth: 780



SEACLIFF YELLOW LOCATED IN COTTAGE

District: East End, Cayman Islands
MLS# 419177
Beds: 2
Status: Current

Price: US\$599,000
Type: Residential
Baths: 2.5



EAST END PARADISE VILLAS. 3 BED, 3 BATH + DEN WITH PRIVATE BEACH

District: East End, Cayman Islands
MLS# 419938
Beds: 3
Status: Current

Price: US\$599,000
Type: Residential
Baths: 3.5



BRAND NEW 3-BEDROOM HOME IN HYRE VIEW

District: East End, Cayman Islands

Price: CI\$480,000

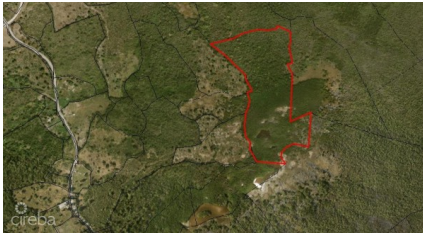
MLS# 420148

Type: Residential

Beds: 3

Baths: 2

Status: Current



EAST INTERIOR LAND

District: East End, Cayman Islands

Price: CI\$475,000

MLS# 418443

Type: Land

Width: 500

Depth: 1,200

Status: Current



CASTAWAY COVE GROUND FLOOR INCOME PRODUCER

District: East End, Cayman Islands

Price: US\$575,000

MLS# 420025

Type: Residential

Beds: 2

Baths: 2

Status: Current



DEVELOPMENT LAND FRANK SOUND WITH APPROVED PLANS

District: East End, Cayman Islands

Price: CI\$465,000

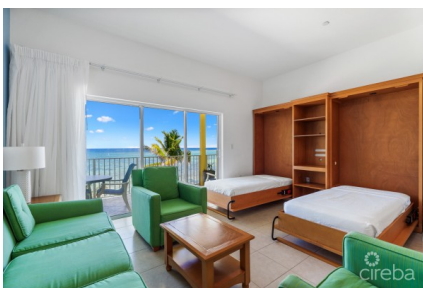
MLS# 419915

Type: Land

Width: 105

Depth: 209

Status: Current



CASTAWAY COVE BEACHFRONT - 2 BED, 2 BATH, A AND B LOCK OFF UNIT

District: East End, Cayman Islands

Price: US\$535,000

MLS# 419314

Type: Residential

Beds: 2

Baths: 2

Status: Current



NATALIA'S COTTAGE - 2-BEDROOM HOME

District: East End, Cayman Islands

Price: CI\$425,000

MLS# 420157

Type: Residential

Beds: 2

Baths: 2

Status: Current



COMPASS POINT PENTHOUSE 2BR END UNIT

District: East End, Cayman Islands

Price: US\$515,000

MLS# 418087

Type: Residential

Beds: 2

Baths: 2

Status: Current
